

CINEMA Chroma RGBW Cuttable Flex LED Ribbon® RGBW COB series is a new series light strip creates a virtually seamless, diffused, soft output without the ability to see individual light points unlike the traditional led strips. The innovative RGBW COB LED Strip design shows minimal light dots making the RGBW COB strip an idea design for the place where a soft light and no dot effect is required. The RGBW COB only 12mm width makes the strip can be installed in any narrow place. The RGBW COB use chip-on-board(COB) type design arranged the Red, Green, Blue, Tungsten or Daylight in a narrow 12mm PCB, for Tungsten and Daylight come with a high Ra over 95 and TLCI over 95, which is a best choice for highend project which need a high CRI and continous lighting effect, and also an idea product for the film, studioo and photography industry.



### 24V TECHNICAL SPECIFICATIONS, 24VDC

**Product Name:** LED Ribbon™ Cinema Chroma RGBW COB Strip Series

**Product Code:** GLUA24CV012L0000FQ07W952C3

**Part Number:** GLU-S4L0000FQ952-24V

**Color:** RGBW

**LED Chips Qty./M:** 952LEDs(RGB/T/D each 238pcs)

**Working Voltage:** 24 VDC Typ. (18-26 VDC Constant Voltage)

**Max. Current per meter:** 1A

**Max. Power per meter:** 24W

**Current for each color per meter:** R/G/B 0.22A T 0.34A

**Power for each color per meter:** R/G/B 5.28W T 8.16W

**Wavelength Colors:** R 620-625nm G 520-525nm B 460-465nm

**CCT Whites:** Tungsten 3100K(+/-100K)

**View Angle:** 180°

**Lumen(Whites) per Meter:** 580(Tungsten)

**Lumen(Colors) per Meter:** 142(Red)/550(Green)/95(Blue)

**CRI:** 95+(Tungsten)

**TLCI:** 95+(Tungsten)

**Cuttable or not:** Yes

**Max. Length (UL/CUL Standard):** 4000mm(157.48in./13.12ft)

**Max. Length (CE Standard):** 5000mm(196.85in./16.4ft)

**Mini Cuttable Segment:** 29.41mm(1.16in.)

**Cuttable Segment per meter:** 34

**Chips per Cut Segment:** 28pcs(R/G/B/W each 7pcs)

**Total Chips per Roll:** 3808pcs(UL/CUL Standard),4760pcs(CE Standard)

**PCB Width:** 12mm(0.47 in.)

**Strip overall Thickness:** 2.8mm(0.11 in.)

**Copper Thickness:** 3oz(1oz+2oz)

**Connector:** 5 pin Bared Cable

**Mounting:** 3M 9080HL(Others optional)

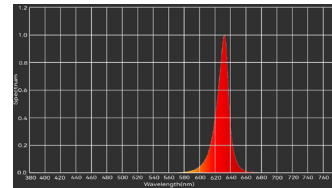
**Operation Temperature:** -20° C to +50° C

**LED Lifetime:** 50,000 Hrs

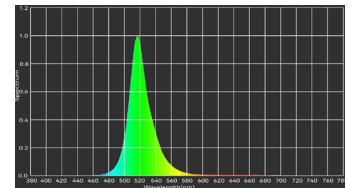
**IP Grade:** IP20

**Certification:** UL/CUL( US/Canada),CE Compliant (Europe)

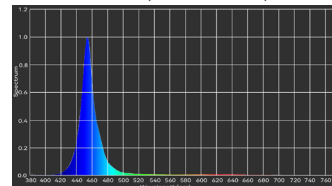
### RGB COLOR SPECTRUM & WAVELENGTH



Red Color (WLD621.6nm)



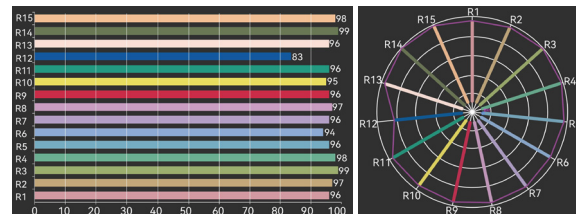
Green Color (WLD523.5nm)



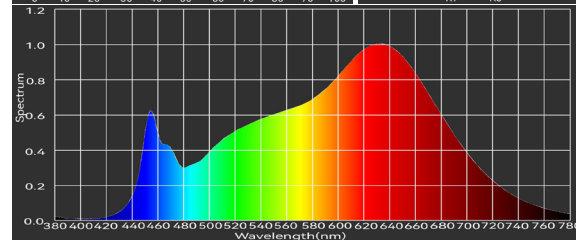
Blue Color (WLD458.8nm)

### Tungsten/Warm White Color Spectrum & Wavelength

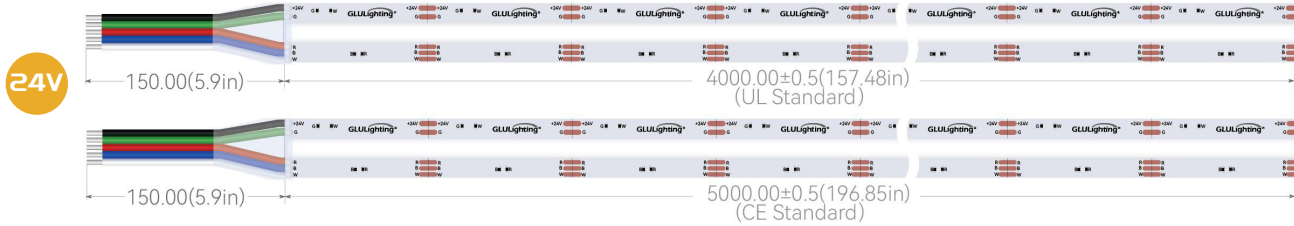
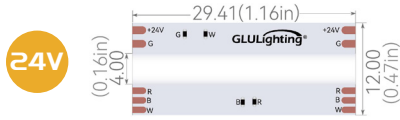
Warmwhite 3085K Ra=96.6



Rf=94,  
Rg=102,  
CQS=97,  
TLCI=97.68



### DIMENSION



### ACCESSORIES

#### Jumper Wire

- 18/20AWG Jumper Wire in 15cm      GLU-W6P-15
- 18/20AWG Jumper Wire in 100m Roll      GLU-W6P-10000

#### Connecting PCB

- Express BusBar 6 Wires For 12mm Width PCB      GLU-EBB6-12

#### High Frequency DMX Decoder

- 12-24V, 25-48V, 6CH×5A      GDE0605HF
- 12-24V 6CH×10A, 25-48V, 6CH×6A,      GDE0610HF

#### Power Supplier

- Meanwell LRS Series      LRS-350-12/24/48
- Meanwell LRS Series      HLG-240H-12/24/48A, HLG-320H-12/24/48A

#### Adaptor

- Meanwell GTS Series      GST280A12/24/48-C6P
- Meanwell GTS Series      GST360A12-C8P/GST360A24/48-C6P

*More Accessories, please contact sales man for catalogue.*

SHENZHEN GLU LIGHTING CO., LTD.

6F, Bldg A2, New Times Gongrong Industrial Area, No.2 Shihuan Rd.,  
Shilong Community, Shiyuan Sub-district, Bao'an District, Shenzhen,  
Guangdong Province, P.R.China, 518108

Tel: +86-755-23708101/23708102

Email: [info@glu-light.com](mailto:info@glu-light.com), [sales@glu-light.com](mailto:sales@glu-light.com)

Web: [www.glu-lightstrip.com](http://www.glu-lightstrip.com)

